

# Safe Haven for Schools:

*Optimizing Solar Systems at Schools  
with Other Sources for Emergency Power*



- State of Connecticut – 2013
- Grant-Award Winning Interconnection and Microgrid Design for Benefit of Town of Windham
- Based upon Principles of DERP TECH Power Continuity Unit

# ENERGY RESILIENCY SYSTEM™

**“Resilient Communities are Better Places to Live, to Work and to Visit”**

*PCU Device is the heart of the Energy Resiliency System, designed to “Bridge the Gap Between the Legacy Grid and the Smart Grid”.*

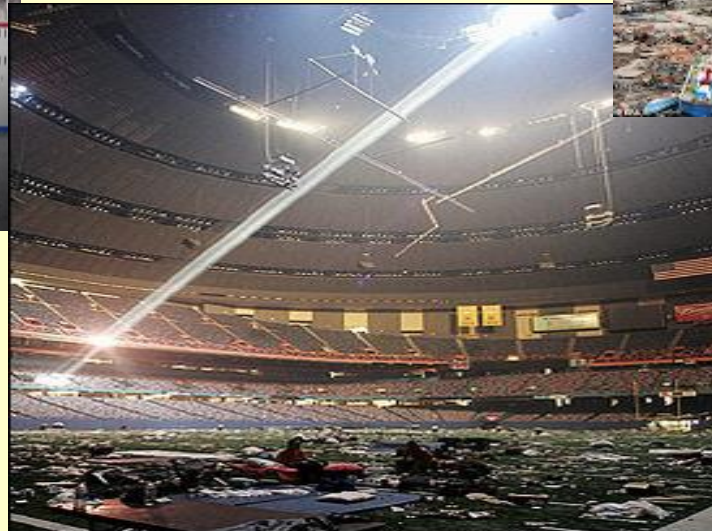
**Customers:** utility, private and institutional substation owners  
local communities PLUS Community/Shared Power

**Energy Benefits:** Distributed generation reduces risks  
(climate; continuity; peak load; cascading failure)  
may reduce wear/tear on older/“legacy” grid.

**Economic Benefits:** Decentralized Power –Improves “yield”  
Local ownership = local jobs

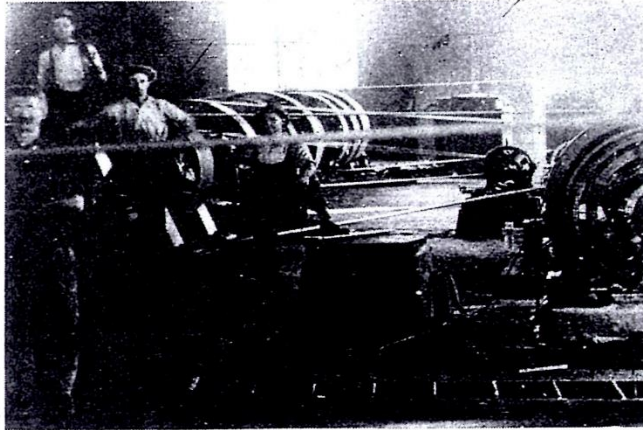
**Security Benefits:** Safer; prevents/reduces recovery time  
from power- losses jobs and

# MEMORABLE IMAGES = LEARNING OPPORTUNITIES



- *Carnival Cruises*
- *When the lights went on in the Superdome after Sheltering for Hurricane Katrina.*
- *Japan's Tsunami*

**WHEN "ENERGY JOBS" = "LOCAL JOBS"**



Equipment and personnel at the H. & F. Railway Company plant at Lee and Summit Streets in Hagerstown in the early 1900's.



And Reddy is already planning for a big electrical future here. New generating units, new power lines, new facilities to help you Live Better...Electrically.

**SERVING THIS  
GROWING COMMUNITY  
SINCE 1896**

**WITH CHEAP and AMPLE  
ELECTRIC POWER**

The Hagerstown and Frederick Railway Co. (a predecessor of The Potomac Edison Co.) purchased Hagerstown's first light plant in 1896.

Since this small beginning, P.E.'s electric power facilities have grown until today when 21 sources of power are now available to customers in this area.

**THE POTOMAC EDISON COMPANY**

---