

---

# CONSOL Energy and the States of the U.S. Coal Mining and Coal-Fired Electric Generation Industries

**Steve Winberg, V. P. Research & Development, CONSOL Energy Inc.**

---



*TransTech Energy Business Development Conference  
Morgantown, WV  
November 7, 2013*

# Outline

---

- Overview of CONSOL Energy Inc.
- CONSOL's interest in emerging technologies

# CONSOL Energy Overview

The Leading Diversified Fuel Producer in the Eastern United States

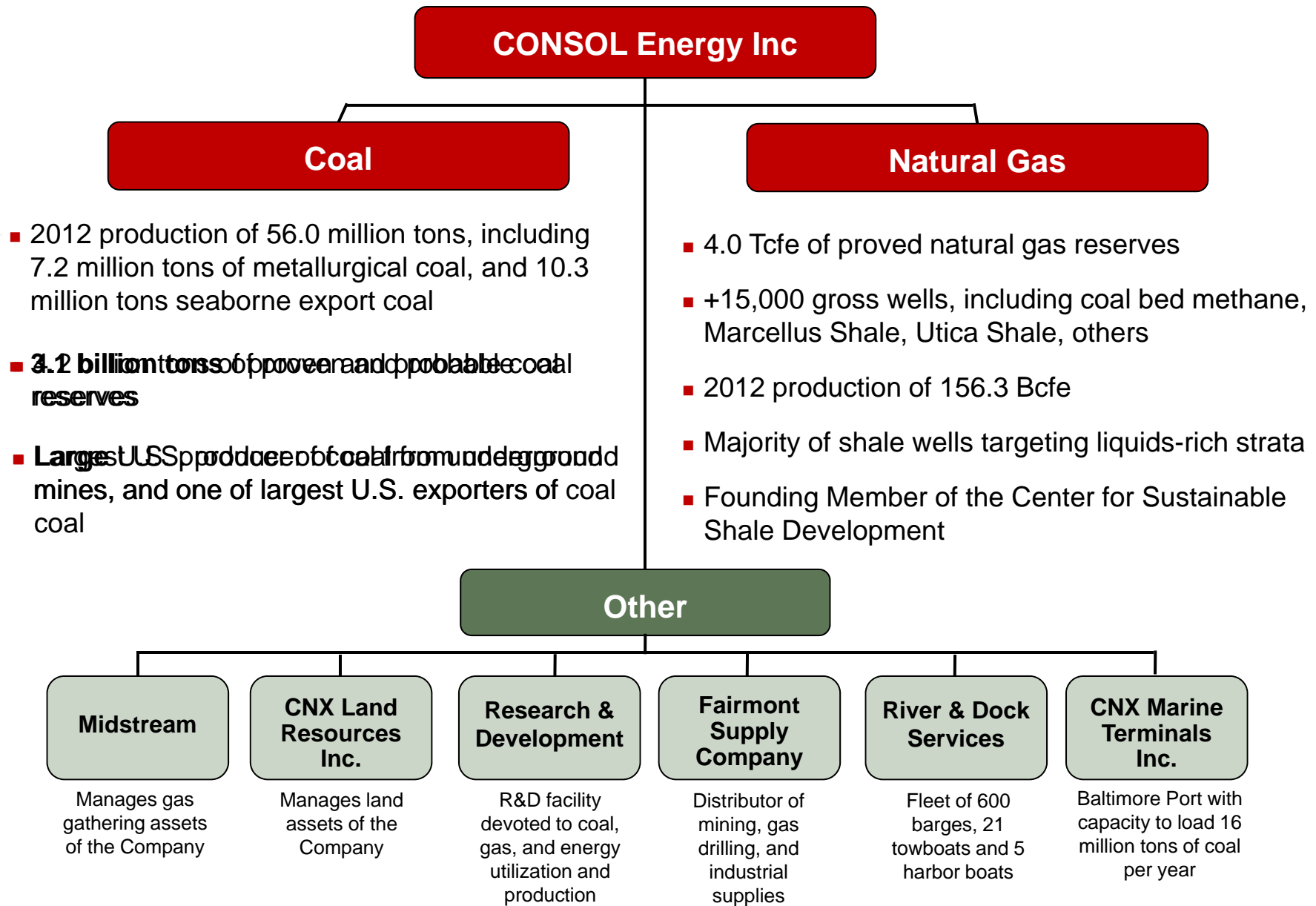


- Ticker: CNX
- Headquartered in Pittsburgh, Pennsylvania
- Company founded in 1860
- Approx. 9,000 employees
- Market cap = \$7.5 Billion<sup>(2)</sup>
- 2012 revenue = \$5.4 Billion
- 2012 capex + \$1.6 Billion

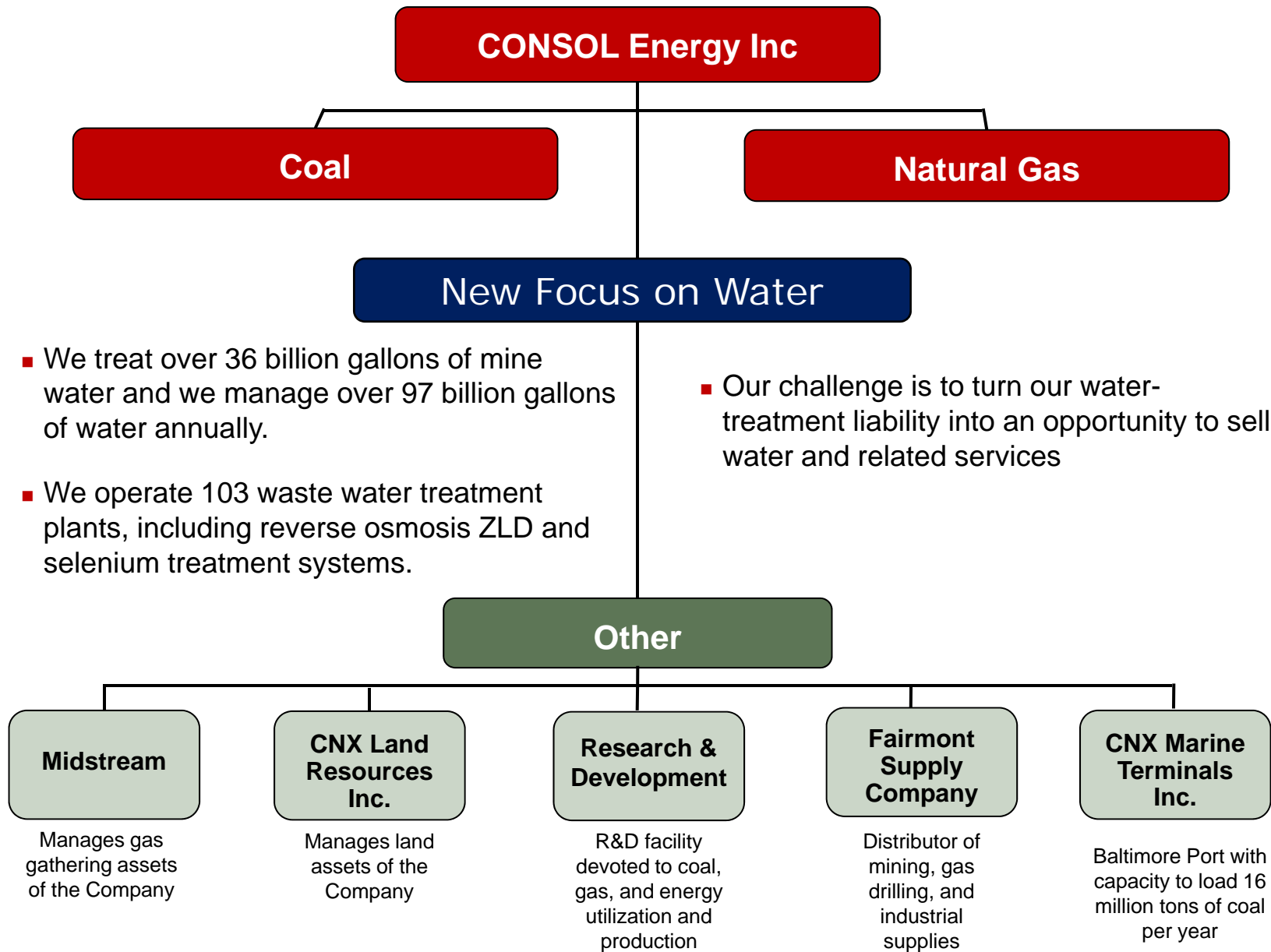


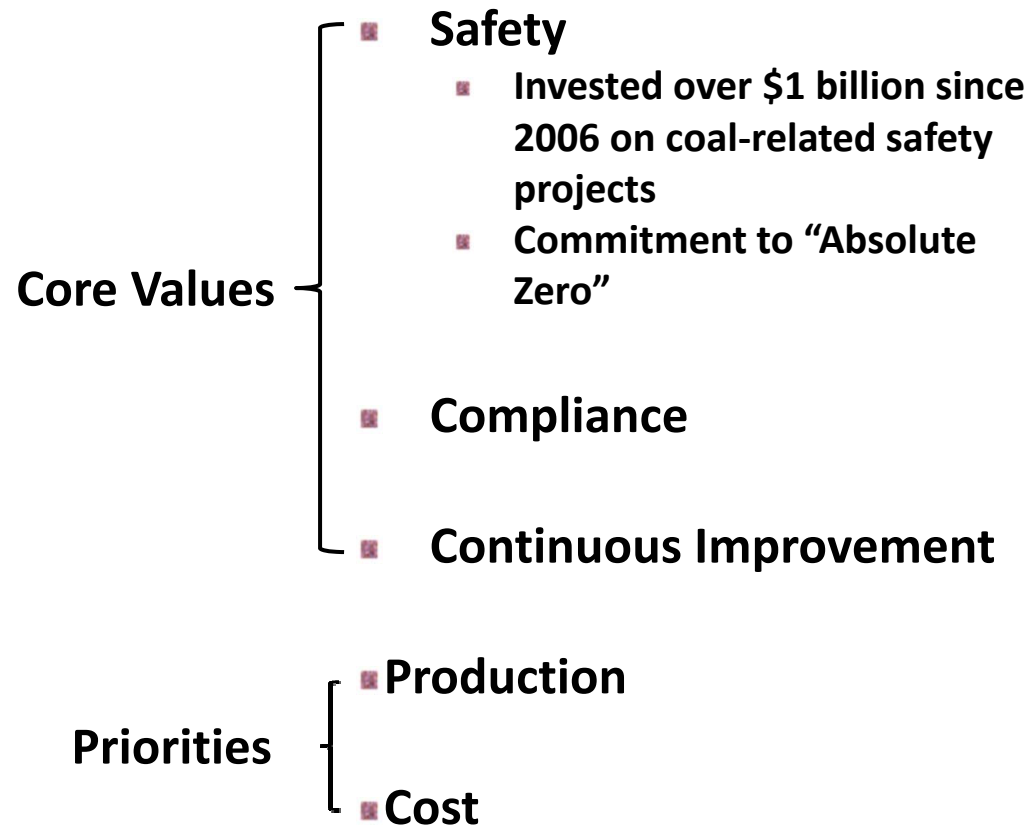
(1) As of February 12, 2013.

# Coal and Gas: Rich Asset Base With Some Vertical Integration



# Coal and Gas: Rich Asset Base With Some Vertical Integration





# CONSOL Interest in Emerging Technologies

- Generally, CONSOL does not take a financial interest in technology – we are technology users, now owners
- Interested in hosting pre-commercial field tests – less interest in proof-of-concept, lab/bench scale development
- Areas of interest

CONSOL Ops	COAL	Nat Gas	Water
Safety	✓	✓	✓
Compliance	✓	✓	✓
Continuous Improvement	✓	✓	✓

